

HARRISON SUPERDUCT® PVC DUCT PIPE & FITTINGS

For Harrison Fume Exhaust Systems



HARRISON MACHINE & PLASTIC
CORPORATION

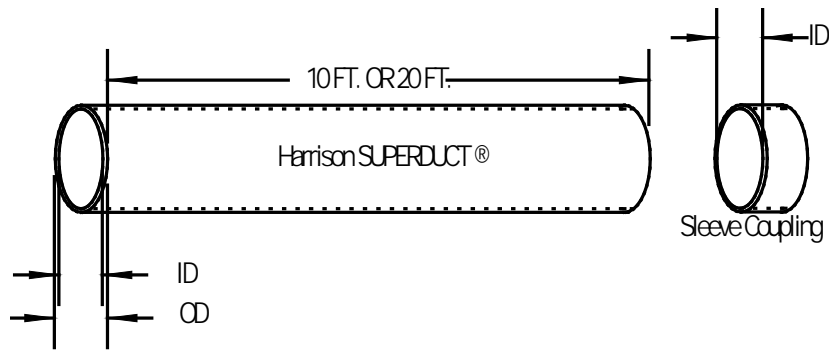
Dimensions Catalog



Table of Contents

<u>Description</u>	<u>Page No.</u>
SUPERDUCT® Pipe	3
Bell Dimensions	4
90° Elbow	4
45° Elbow	5
Coupling	5
Reducer Coupling	6
Cap	7
True Wye	8
45° Wye	9
Tee	10
Rainskirt	11
Rain Cap 'Style A'	12
Rain Cap 'Style B'	13
Blind Flange	14
Butterfly Damper	15
Socket Flange	16
Blastgate Damper	17
Flex Hose Adapter – Bell End	18
Flex Hose Adapter – Plain End	19
Flexible Duct	20
Flexible Coupling	21
Hoods	22
Transitions	22

Note: The dimensions shown on the following pages of this catalog are essentially shown as “Center to End” dimensions, which apply to both belled end as well as plain end fittings. To determine “take-out” dimensions for belled end fittings, refer to the bell depths below to make appropriate calculations.



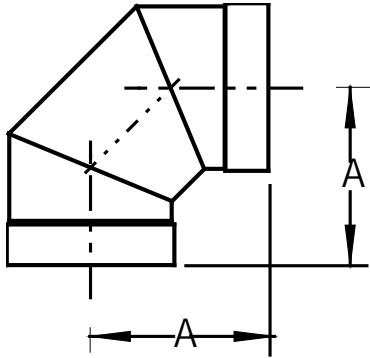
SUPERDUCT® Pipe						
Part No.	Size	(O.D.)	(I.D.)	Wall	Approx. Wgt/Ft	Standard Length
	Extruded				(Lbs)	
1033-PP-02	2"	2.375"	2.047"	0.154"	0.720	10 ft. or 20 ft.
1033-PP-03	3"	3.500"	3.042"	0.216"	1.488	10 ft. or 20 ft.
1033-PP-04	4"	4.500"	3.998"	0.237"	2.118	10 ft. or 20 ft.
1033-PP-05	5"	5.563"	5.016"	0.258"	2.874	10 ft. or 20 ft.
1033-PP-06	6"	6.625"	6.250"	0.187"	2.340	10 ft. or 20 ft.
1033-PP-07	7"	7.375"	7.000"	0.187"	2.534	10 ft. or 20 ft.
1033-PP-08	8"	8.625"	8.250"	0.187"	3.060	10 ft. or 20 ft.
1033-PP-09	9"	9.375"	9.000"	0.187"	3.239	10 ft. or 20 ft.
1033-PP-10	10"	10.750"	10.380"	0.187"	3.830	10 ft. or 20 ft.
1033-PP-11	11"	11.375"	11.000"	0.187"	3.944	10 ft. or 20 ft.
1033-PP-12	12"	12.750"	12.380"	0.187"	4.560	10 ft. or 20 ft.
1033-PP-14	14"	14.000"	13.630"	0.187"	5.010	10 ft. or 20 ft.
1033-PP-16	16"	16.000"	15.630"	0.187"	5.740	10 ft. or 20 ft.
1033-PP-18	18"	18.000"	17.630"	0.187"	6.460	10 ft. or 20 ft.
1033-PP-20	20"	20.000"	19.500"	0.219"	9.580	10 ft. or 20 ft.
1033-PP-24	24"	24.000"	23.500"	0.250"	11.520	10 ft. or 20 ft.
	Rolled					
1033-PP-22	22"	22.000"	21.626"	0.187"	8.550	4 ft. w/ Coupling
1033-PP-26	26"	26.000"	25.626"	0.187"	10.070	4 ft. w/ Coupling
1033-PP-28	28"	28.000"	27.626"	0.187"	10.850	4 ft. w/ Coupling
1033-PP-30	30"	30.000"	29.626"	0.187"	11.640	4 ft. w/ Coupling
Duct diameter thru 60" available. Contact factory for details.						



HARRISON MACHINE & PLASTIC CORPORATION

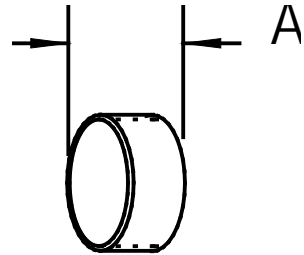
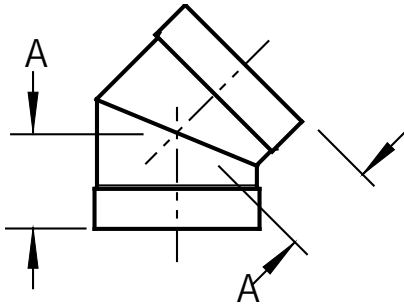
11614 ST. RT. 88 | GARRETTSVILLE, OH

Ph. 330.527.5641 | Fax 330.527.5640



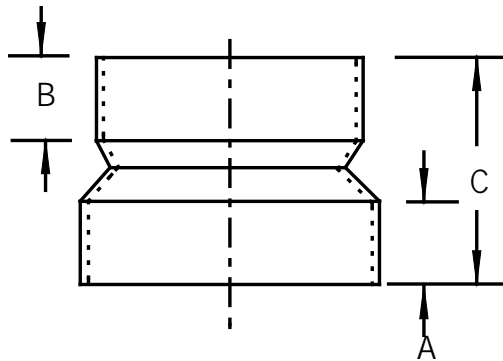
90° Elbow Belled (3 piece)			
Part No.	Size	A	Approx. Wgt (Lbs)
1034-90-02	2 "	7.187 "	1
1034-90-03	3 "	9.000 "	2
1034-90-04	4 "	9.250 "	3
1034-90-05	5 "	9.937 "	5
1034-90-06	6 "	10.500 "	5
1034-90-07	7 "	10.875 "	5
1034-90-08	8 "	11.437 "	6
1034-90-09	9 "	11.875 "	6
1034-90-10	10 "	14.750 "	8
1034-90-11	11 "	14.937 "	9
1034-90-12	12 "	15.625 "	11
1034-90-14	14 "	15.750 "	12
1034-90-16	16 "	18.000 "	18
1034-90-18	18 "	19.062 "	24
1034-90-20	20 "	21.500 "	32
1034-90-24	24 "	23.500 "	41

Bell Dimensions	
Size	Socket Depth
2 "	1.50"
3 "	1.75"
4 "	2.00"
5 "	2.00"
6 "	2.00"
7 "	2.25"
8 "	2.25"
9 "	2.25"
10 "	2.50"
11 "	2.50"
12 "	2.50"
14 "	2.50"
16 "	2.50"
18 "	2.50"
20 "	3.00"
24 "	3.00"

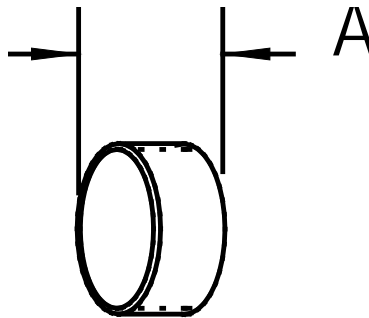


45° Elbow Belled (2 piece)			
Part No.	Size	A	Approx. Wgt (Lbs)
1034-45-02	2 "	3.000 "	1
1034-45-03	3 "	4.750 "	1
1034-45-04	4 "	4.937 "	2
1034-45-05	5 "	5.156 "	3
1034-45-06	6 "	5.375 "	3
1034-45-07	7 "	5.500 "	3
1034-45-08	8 "	5.812 "	3
1034-45-09	9 "	6.000 "	4
1034-45-10	10 "	6.250 "	4
1034-45-11	11 "	6.375 "	5
1034-45-12	12 "	6.625 "	6
1034-45-14	14 "	6.875 "	7
1034-45-16	16 "	7.562 "	7
1034-45-18	18 "	8.000 "	11
1034-45-20	20 "	9.125 "	15
1034-45-24	24 "	10.000 "	20

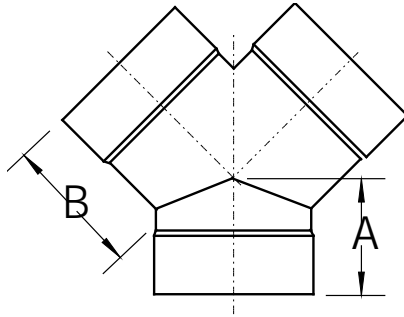
Coupling Sleeved			
Part No.	Size	A	Approx. Wgt (Lbs)
1034-CP-02	2 "	4.000 "	0.5
1034-CP-03	3 "	4.000 "	1
1034-CP-04	4 "	4.000 "	1
1034-CP-05	5 "	4.500 "	1
1034-CP-06	6 "	4.500 "	1
1034-CP-07	7 "	4.500 "	1
1034-CP-08	8 "	4.500 "	2
1034-CP-09	9 "	4.500 "	2
1034-CP-10	10 "	4.500 "	2
1034-CP-11	11 "	4.500 "	2
1034-CP-12	12 "	4.500 "	2
1034-CP-14	14 "	4.500 "	2
1034-CP-16	16 "	4.500 "	3
1034-CP-18	18 "	4.500 "	3
1034-CP-20	20 "	4.500 "	4
1034-CP-24	24 "	4.500 "	5



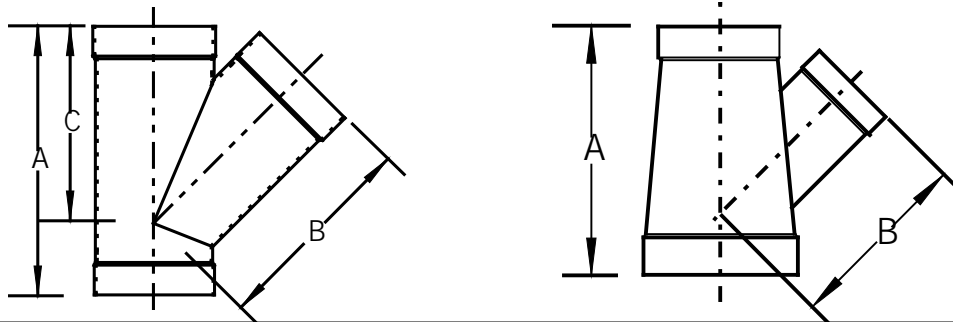
Reducer Coupling					
One Step (Bell x Bell)					
Part No.	Size	A	B	C	Approx. Wgt (Lbs)
1034-RC-0403	4" x 3"	1.750 "	1.750 "	7.000 "	1
1034-RC-0604	6" x 4"	2.000 "	1.750 "	7.000 "	2
1034-RC-0806	8" x 6"	2.250 "	2.000 "	8.000 "	2
1034-RC-1008	10" x 8"	2.500 "	2.000 "	8.000 "	3
1034-RC-1210	12" x 10"	2.500 "	2.500 "	8.000 "	3
1034-RC-1412	14" x 12"	2.500 "	2.500 "	7.250 "	4
1034-RC-1614	16" x 14"	2.500 "	2.500 "	9.000 "	5
1034-RC-1816	18" x 16"	2.500 "	2.500 "	8.250 "	5
Two Step (Bell x Bell)					
1034-RC-0804	8" x 4"	2.250 "	1.750 "	12.500 "	4
1034-RC-1006	10" x 6"	2.500 "	2.000 "	12.750 "	4
1034-RC-1208	12" x 8"	2.500 "	2.250 "	13.250 "	6
1034-RC-1410	14" x 10"	2.500 "	2.500 "	12.500 "	6
1034-RC-1612	16" x 12"	2.500 "	2.500 "	13.500 "	8
1034-RC-1814	18" x 14"	2.500 "	2.500 "	14.500 "	10
Rolled reducer couplings also available					



Cap (Belled)			
Part No.	Size	A	Approx. Wgt (Lbs)
1034-CA-02	2 "	2.000 "	0.5
1034-CA-03	3 "	2.000 "	1
1034-CA-04	4 "	2.000 "	1
1034-CA-05	5 "	2.000 "	1
1034-CA-06	6 "	2.000 "	1
1034-CA-07	7 "	2.000 "	2
1034-CA-08	8 "	2.000 "	2
1034-CA-09	9 "	2.000 "	2
1034-CA-10	10 "	2.000 "	2
1034-CA-11	11 "	2.000 "	2
1034-CA-12	12 "	2.000 "	2
1034-CA-14	14 "	2.000 "	3
1034-CA-16	16 "	2.000 "	3
1034-CA-18	18 "	2.000 "	4
1034-CA-20	20 "	2.000 "	6
1034-CA-24	24 "	2.000 "	7



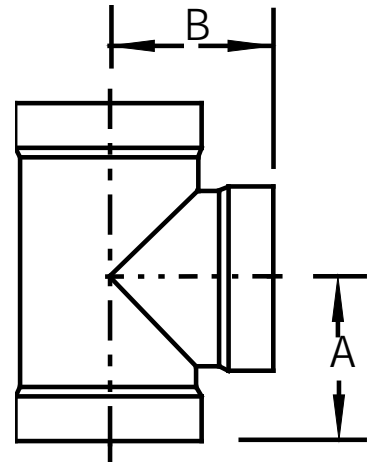
True Wye				
Belled				
Part No.	Size	A	B	Approx. Wgt (Lbs)
1034-TY-02	2 "	2.750 "	2.375 "	1
1034-TY-03	3 "	3.250 "	4.750 "	1.5
1034-TY-04	4 "	4.000 "	5.250 "	2
1034-TY-05	5 "	4.375 "	5.750 "	2.5
1034-TY-06	6 "	4.437 "	6.250 "	3
1034-TY-07	7 "	4.562 "	6.750 "	4
1034-TY-08	8 "	5.812 "	8.375 "	5
1034-TY-09	9 "	6.000 "	8.750 "	6
1034-TY-10	10 "	6.250 "	9.500 "	7
1034-TY-11	11 "	6.437 "	9.750 "	8
1034-TY-12	12 "	6.656 "	10.250 "	9
1034-TY-14	14 "	6.875 "	11.000 "	10
1034-TY-16	16 "	7.312 "	12.000 "	12
1034-TY-18	18 "	8.500 "	14.000 "	16
1034-TY-20	20 "	9.000 "	14.750 "	26
1034-TY-24	24 "	10.750 "	18.000 "	31

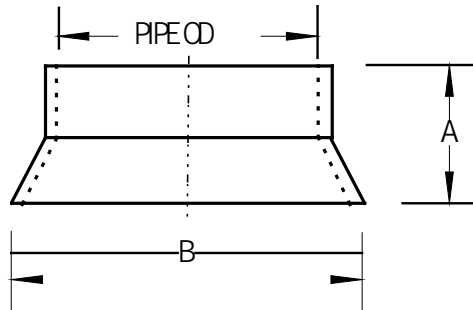


45° Wye Belled					
Part No.	Size	A	B	C	Approx. Wgt (Lbs)
1034-Y-0604	6 X 6 X 4 "	15.875 "	10.750 "	11.750 "	4
1034-Y-06	6 X 6 X 6 "	18.875 "	13.250 "	13.250 "	5
1034-Y-07	7 X 7 X 7 "	20.375 "	14.375 "	14.375 "	8
1034-Y-0804	8 X 8 X 4 "	16.375 "	12.250 "	13.062 "	6
1034-Y-0806	8 X 8 X 6 "	19.375 "	13.312 "	14.500 "	7
1034-Y-08	8 X 8 X 8 "	22.187 "	15.875 "	15.875 "	8
1034-Y-09	9 X 9 X 9 "	23.375 "	16.875 "	16.875 "	11
1034-Y-1006	10 X 10 X 6 "	20.375 "	15.312 "	16.250 "	9
1034-Y-1008	10 X 10 X 8 "	23.187 "	16.312 "	17.750 "	11
1034-Y-10	10 X 10 X 10 "	26.250 "	19.312 "	19.312 "	13
1034-Y-11	11 X 11 X 11 "	27.250 "	20.000 "	20.000 "	16
1034-Y-1208	12 X 12 X 8 "	23.312 "	17.750 "	18.750 "	13
1034-Y-1210	12 X 12 X 10 "	26.375 "	18.750 "	20.250 "	16
1034-Y-12	12 X 12 X 12 "	29.250 "	21.687 "	21.687 "	15
1034-Y-1410	14 X 14 X 10 "	26.250 "	19.625 "	20.875 "	18
1034-Y-1412	14 X 14 X 12 "	29.000 "	20.750 "	22.250 "	22
1034-Y-14	14 X 14 X 14 "	30.750 "	23.125 "	23.125 "	17
1034-Y-1612	16 X 16 X 12 "	29.000 "	22.125 "	23.375 "	24
1034-Y-1614	16 X 16 X 14 "	30.750 "	22.750 "	24.250 "	26
1034-Y-16	16 X 16 X 16 "	33.625 "	25.625 "	25.625 "	24
1034-Y-1814	18 X 18 X 14 "	31.250 "	24.250 "	25.375 "	29
1034-Y-1816	18 X 18 X 16 "	34.125 "	25.375 "	26.875 "	29
1034-Y-18	18 X 18 X 18 "	37.000 "	28.250 "	28.250 "	40
1034-Y-20	20 X 20 X 20 "	40.750 "	31.125 "	31.125 "	53
1034-Y-2418	24 X 24 X 18 "	38.000 "	30.750 "	31.750 "	48
1034-Y-24	24 X 24 X 24 "	46.500 "	36.000 "	36.000 "	78

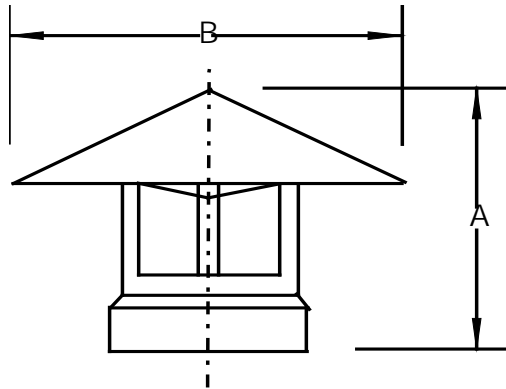


Tee Belled				
Part No.	Size	A	B	Approx. Wgt (Lbs)
1034-T-0604	6 x 6 x 4 "	7.312 "	6.500 "	3
1034-T-06	6 x 6 x 6 "	7.562 "	7.562 "	4
1034-T-07	7 x 7 x 7 "	8.187 "	8.187 "	5
1034-T-0804	8 x 8 x 4 "	8.312 "	6.750 "	4
1034-T-0806	8 x 8 x 6 "	8.562 "	7.812 "	5
1034-T-08	8 x 8 x 8 "	8.812 "	8.812 "	6
1034-T-09	9 x 9 x 9 "	9.187 "	9.187 "	7
1034-T-1006	10 x 10 x 6 "	9.625 "	8.062 "	6
1034-T-1008	10 x 10 x 8 "	9.875 "	9.062 "	7.5
1034-T-10	10 x 10 x 10 "	10.125 "	10.125 "	8
1034-T-11	11 x 11 x 11 "	10.437 "	10.437 "	9.5
1034-T-1206	12 x 12 x 6 "	10.625 "	8.062 "	7
1034-T-1208	12 x 12 x 8 "	10.875 "	9.062 "	8.5
1034-T-1210	12 x 12 x 10 "	11.125 "	10.125 "	10.5
1034-T-12	12 x 12 x 12 "	11.125 "	11.125 "	10
1034-T-1410	14 x 14 x 10 "	11.750 "	10.125 "	11.5
1034-T-1412	14 x 14 x 12 "	11.750 "	11.125 "	12
1034-T-14	14 x 14 x 14 "	11.750 "	11.750 "	12
1034-T-1612	16 x 16 x 12 "	12.750 "	11.125 "	14.5
1034-T-1614	16 x 16 x 14 "	12.750 "	11.750 "	16
1034-T-16	16 x 16 x 16 "	12.750 "	12.750 "	16
1034-T-1814	18 x 18 x 14 "	13.750 "	12.000 "	17
1034-T-1816	18 x 18 x 16 "	13.750 "	13.000 "	19
1034-T-18	18 x 18 x 18 "	14.000 "	14.000 "	18
1034-T-20	20 x 20 x 20 "	15.500 "	15.500 "	29
1034-T-2418	24 x 24 x 18 "	17.000 "	14.500 "	33
1034-T-24	24 x 24 x 24 "	17.500 "	17.500 "	40





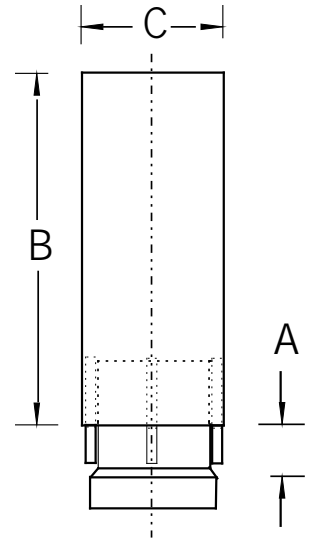
Rainskirt				
Belled				
Part No.	Size	A	B	Approx. Wgt (Lbs)
1034-RS-02	2 "	2.250 "	4.500 "	0.5
1034-RS-03	3 "	2.625 "	5.500 "	1
1034-RS-04	4 "	4.000 "	6.875 "	1
1034-RS-05	5 "	4.000 "	8.000 "	1
1034-RS-06	6 "	4.000 "	8.875 "	1
1034-RS-07	7 "	4.000 "	10.250 "	2
1034-RS-08	8 "	4.000 "	11.375 "	2
1034-RS-09	9 "	4.000 "	12.250 "	2
1034-RS-10	10 "	4.000 "	13.625 "	2
1034-RS-11	11 "	4.000 "	14.000 "	2
1034-RS-12	12 "	4.000 "	16.250 "	2
1034-RS-14	14 "	4.000 "	17.000 "	2
1034-RS-16	16 "	4.000 "	19.000 "	3
1034-RS-18	18 "	6.000 "	22.000 "	4
1034-RS-20	20 "	6.000 "	23.625 "	6
1034-RS-24	24 "	8.000 "	27.000 "	8

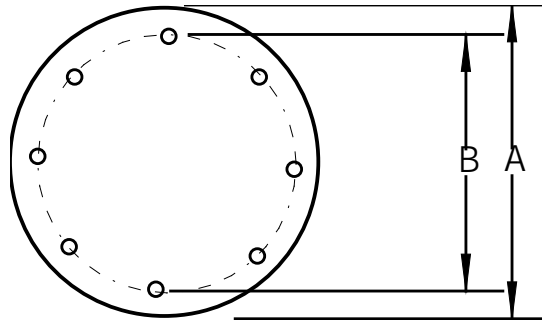


Raincap 'Style A'				
Belled				
Part No.	Size	A	B	Approx. Wgt (Lbs)
1034-WCA-02	2 "	8.000 "	4.000 "	1
1034-WCA-03	3 "	8.500 "	6.000 "	1
1034-WCA-04	4 "	9.000 "	8.000 "	2
1034-WCA-05	5 "	9.500 "	10.000 "	3
1034-WCA-06	6 "	10.500 "	12.000 "	3
1034-WCA-07	7 "	11.000 "	14.000 "	4.5
1034-WCA-08	8 "	12.250 "	16.000 "	5
1034-WCA-09	9 "	13.000 "	18.000 "	6
1034-WCA-10	10 "	13.500 "	20.000 "	7
1034-WCA-11	11 "	14.000 "	22.000 "	8.5
1034-WCA-12	12 "	15.250 "	23.000 "	9
1034-WCA-14	14 "	16.000 "	28.000 "	12
1034-WCA-16	16 "	16.750 "	32.000 "	15
1034-WCA-18	18 "	17.500 "	36.000 "	17
1034-WCA-20	20 "	18.500 "	40.000 "	27
1034-WCA-24	24 "	19.000 "	44.000 "	37

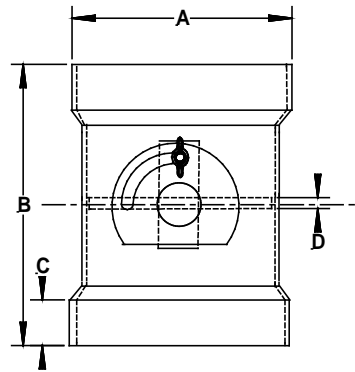


Raincap 'Style B'					
Belled					
Part No.	Size	A	B	C	Approx. Wgt (Lbs)
1034-WCB-02	2 "	6.000 "	8.000 "	3.500 "	2
1034-WCB-03	3 "	6.000 "	12.000 "	4.500 "	4
1034-WCB-04	4 "	6.000 "	16.000 "	6.625 "	6
1034-WCB-05	5 "	8.000 "	18.000 "	7.375 "	9
1034-WCB-06	6 "	8.000 "	24.000 "	8.625 "	11
1034-WCB-07	7 "	8.000 "	28.000 "	9.375 "	14
1034-WCB-08	8 "	8.000 "	32.000 "	10.750 "	16
1034-WCB-09	9 "	8.000 "	36.000 "	11.375 "	18
1034-WCB-10	10 "	8.000 "	40.000 "	12.750 "	23
1034-WCB-11	11 "	8.000 "	44.000 "	12.750 "	24
1034-WCB-12	12 "	8.000 "	48.000 "	14.000 "	28
1034-WCB-14	14 "	8.000 "	56.000 "	16.000 "	39
1034-WCB-16	16 "	8.000 "	64.000 "	18.000 "	53
1034-WCB-18	18 "	10.000 "	72.000 "	20.000 "	61
1034-WCB-20	20 "	10.000 "	80.000 "	22.000 "	88
1034-WCB-24	24 "	12.000 "	96.000 "	26.000 "	110
Zero pressure loss feature					





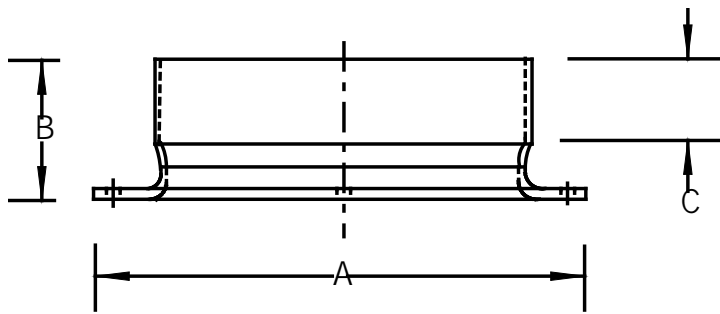
Blind Flange					
				# Bolt	Approx. Wgt
Part No.	Size	A	B	Holes	(Lbs)
1034-BF-02	2 "	6.000 "	5.000 "	4	0.5
1034-BF-03	3 "	7.500 "	6.000 "	4	0.5
1034-BF-04	4 "	8.000 "	6.500 "	6	0.5
1034-BF-05	5 "	9.000 "	7.500 "	8	1
1034-BF-06	6 "	10.000 "	8.500 "	8	1
1034-BF-07	7 "	11.000 "	9.500 "	8	1
1034-BF-08	8 "	12.000 "	10.500 "	10	2
1034-BF-09	9 "	13.000 "	11.500 "	10	2
1034-BF-10	10 "	14.000 "	12.500 "	12	2
1034-BF-11	11 "	15.000 "	13.500 "	12	2
1034-BF-12	12 "	16.000 "	14.500 "	14	3
1034-BF-14	14 "	18.000 "	16.500 "	16	3
1034-BF-16	16 "	20.000 "	18.500 "	18	4
1034-BF-18	18 "	22.000 "	20.500 "	20	5
1034-BF-20	20 "	24.000 "	22.500 "	22	6
1034-BF-24	24 "	28.000 "	26.500 "	24	6
All flanges are 3/16" thick material					
All bolt holes are 5/16" diameter					



Features and Benefits

- *Materials of Construction:
Body, damper plate & shaft:
PVC, CPVC, PP, HDPE
- *Locking hardware: stainless steel
- *Allows for less than 5% air-flow restriction
- *Offers an approximate 95% seal
- *Optional positive seal shaft & damper plate
- *90° damper plate operation
- *Can be installed vertically or horizontally
- *Sizes Offered: 2" thru 24" including 3", 5", 7", 9", 11"
- *Available with belled, socket, flanged, or spigot ends
- *Optional electric motor actuated
- *All plastic internal parts
- *Furnished with locking quadrant damper allowing for permanent position set

Butterfly Damper Belled						
Part No.	Size	A	B	C	D	Approx. Wgt (Lbs)
1034-BD-02	2 "	2.375 "	6.750 "	1.500 "	.187 "	1
1034-BD-03	3 "	3.500 "	7.750 "	1.750 "	.187 "	2
1034-BD-04	4 "	4.500 "	8.500 "	1.750 "	.187 "	3
1034-BD-05	5 "	5.563 "	8.500 "	2.000 "	.187 "	3
1034-BD-06	6 "	6.625 "	9.500 "	2.000 "	.187 "	3
1034-BD-07	7 "	7.375 "	9.500 "	2.250 "	.187 "	3.5
1034-BD-08	8 "	8.625 "	10.500 "	2.250 "	.187 "	4
1034-BD-09	9 "	9.375 "	10.500 "	2.250 "	.187 "	5
1034-BD-10	10 "	10.750 "	11.750 "	2.500 "	.187 "	6
1034-BD-11	11 "	11.375 "	11.750 "	2.500 "	.187 "	6
1034-BD-12	12 "	12.750 "	12.750 "	2.500 "	.187 "	7
1034-BD-14	14 "	14.000 "	13.750 "	2.500 "	.187 "	9
1034-BD-16	16 "	16.000 "	15.750 "	2.500 "	.187 "	12
1034-BD-18	18 "	18.000 "	17.750 "	2.500 "	.250 "	13
1034-BD-20	20 "	20.000 "	19.750 "	3.000 "	.250 "	18
1034-BD-24	24 "	24.000 "	23.750 "	3.000 "	.250 "	28

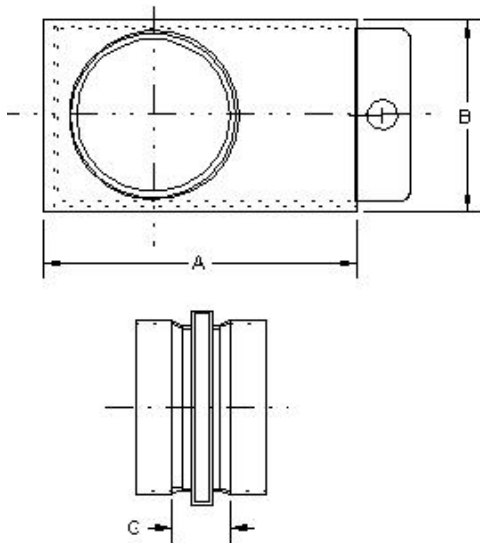


Flange Socket/Belled							
Part No.	Size	A	B	C	Bolt Circle	# Bolt Holes	Approx. Wgt (Lbs)
1034-SF-02	2 "	6.000 "	2.750 "	1.500 "	5.000 "	4	0.5
1034-SF-03	3 "	6.625 "	3.250 "	1.750 "	6.000 "	4	0.5
1034-SF-04	4 "	8.000 "	3.625 "	2.000 "	6.500 "	6	0.75
1034-SF-05	5 "	9.000 "	4.000 "	2.000 "	7.500 "	8	0.75
1034-SF-06	6 "	10.000 "	4.000 "	2.000 "	8.500 "	8	1
1034-SF-07	7 "	11.000 "	4.000 "	2.250 "	9.500 "	8	1
1034-SF-08	8 "	12.000 "	4.000 "	2.250 "	10.500 "	10	2
1034-SF-09	9 "	13.000 "	4.000 "	2.250 "	11.500 "	10	2
1034-SF-10	10 "	14.000 "	4.000 "	2.500 "	12.500 "	12	2
1034-SF-11	11 "	15.000 "	4.000 "	2.500 "	13.500 "	12	2
1034-SF-12	12 "	16.000 "	4.000 "	2.500 "	14.500 "	14	3
1034-SF-14	14 "	18.000 "	4.000 "	2.500 "	16.500 "	16	3
1034-SF-16	16 "	20.000 "	4.000 "	2.500 "	18.500 "	18	4
1034-SF-18	18 "	22.000 "	4.000 "	2.500 "	20.500 "	20	4
1034-SF-20	20 "	24.000 "	4.000 "	3.000 "	22.500 "	22	6
1034-SF-24	24 "	28.000 "	4.000 "	3.000 "	26.500 "	24	8

All flanges are 3/16" thick material
All bolt holes are 5/16" diameter

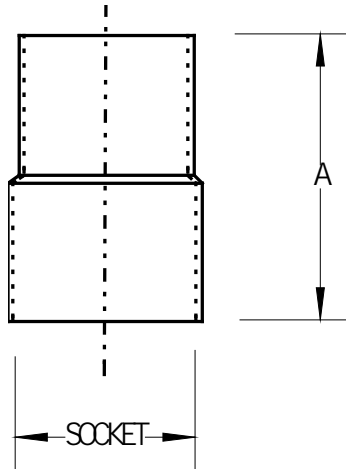
Note: Undrilled flanges also available

Flanges with 150# drilling available on a custom basis

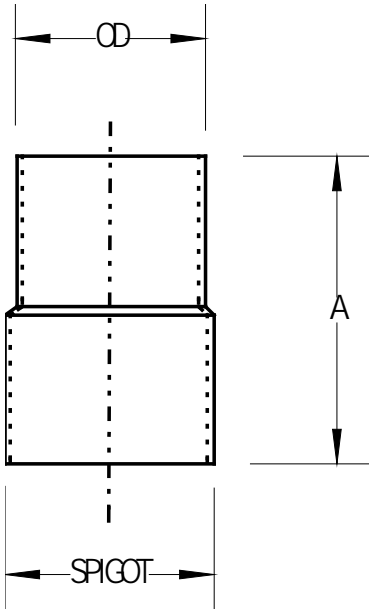


Blastgate					
Belled					
Part No.	Size	A	B	C	Approx. Wgt (Lbs)
1034-BG-02	2 "	6.000 "	3.750 "	1.000 "	1
1034-BG-03	3 "	7.000 "	4.880 "	3.250 "	2
1034-BG-04	4 "	8.000 "	5.560 "	3.250 "	3
1034-BG-05	5 "	11.000 "	8.880 "	5.000 "	5
1034-BG-06	6 "	11.000 "	8.880 "	5.000 "	5
1034-BG-07	7 "	11.000 "	8.880 "	5.000 "	5
1034-BG-08	8 "	14.000 "	10.250 "	4.000 "	6
1034-BG-09	9 "	14.000 "	10.250 "	4.000 "	6
1034-BG-10	10 "	17.000 "	12.380 "	4.500 "	7
1034-BG-11	11 "	20.000 "	12.380 "	4.500 "	8
1034-BG-12	12 "	20.000 "	13.880 "	4.500 "	10
1034-BG-14	14 "	21.750 "	15.500 "	4.500 "	12
1034-BG-16	16 "	23.000 "	17.500 "	4.250 "	13
1034-BG-18	18 "	28.000 "	19.500 "	4.250 "	18
1034-BG-20	20 "	30.750 "	21.500 "	5.750 "	24
1034-BG-24	24 "	34.000 "	25.500 "	5.750 "	34

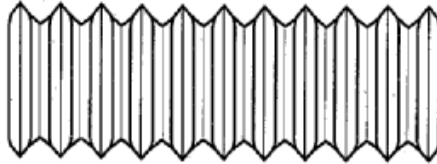
Gate is 3/16" thick material.



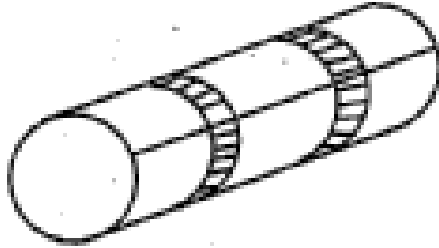
Flex Hose Adapter				
Hose Spigot x Duct Bell				
Part No.	Size	Bell	A	Approx. Wgt
	O.D.	Socket		
	(Hose)	(Duct)		(Lbs)
1034-FHA-02	2 "	2.375 "	5.500 "	1
1034-FHA-03	3 "	3.500 "	6.000 "	1
1034-FHA-04	4 "	4.500 "	7.000 "	2
1034-FHA-05	5 "	5.563 "	7.000 "	2
1034-FHA-06	6 "	6.625 "	7.500 "	2
1034-FHA-08	8 "	8.625 "	9.000 "	3
1034-FHA-10	10 "	10.750 "	9.000 "	3
1034-FHA-12	12 "	12.750 "	9.000 "	3.5
1034-FHA-14	14 "	14.000 "	8.000 "	3.75
1034-FHA-16	16 "	16.000 "	8.000 "	4
1034-FHA-18	18 "	18.000 "	8.000 "	5



Flex Hose Adapter				
Hose Spigot x Duct Spigot				
Part No.	Size	Spigot	A	Approx. Wgt
	O.D. (Hose)	P.E. (Duct)		(Lbs)
1033-FHA-02	2 "	2.375 "	5.500 "	1
1033-FHA-03	3 "	3.500 "	6.000 "	1
1033-FHA-04	4 "	4.500 "	7.000 "	2
1033-FHA-05	5 "	5.563 "	7.000 "	2
1033-FHA-06	6 "	6.625 "	7.500 "	2
1033-FHA-08	8 "	8.625 "	9.000 "	3
1033-FHA-10	10 "	10.750 "	9.000 "	3
1033-FHA-12	12 "	12.750 "	9.000 "	4
1033-FHA-14	14 "	14.000 "	8.000 "	3.75
1033-FHA-16	16 "	16.000 "	8.000 "	5
1033-FHA-18	18 "	18.000 "	8.000 "	5



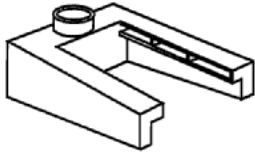
Flexible Duct					
(PVC)					
Part No.	Size	Bare Wire	Wall	Standard	Approx. Wgt/Ft
	I.D.	Gauge		Length	(Lbs)
1033-FH-02	2 "	0.045	0.024 "	25 ft.	0.22
1033-FH-03	3 "	0.045	0.032 "	25 ft.	0.29
1033-FH-04	4 "	0.045	0.032 "	25 ft.	0.36
1033-FH-05	5 "	0.045	0.032 "	25 ft.	0.45
1033-FH-06	6 "	0.064	0.032 "	25 ft.	0.53
1033-FH-08	8 "	0.064	0.032 "	25 ft.	0.64
1033-FH-10	10 "	0.064	0.024 "	15 ft.	0.797
1033-FH-12	12 "	0.064	0.024 "	15 ft.	0.954
1033-FH-14	14 "	0.064	0.024 "	15 ft.	1.111
1033-FH-16	16 "	0.064	0.024 "	15 ft.	1.268
1033-FH-18	18 "	0.064	0.024 "	15 ft.	1.65



Flexible Coupling			
Part No.	Size	A	Approx. Wgt (Lbs)
1034-FC-02	2 "	6 "	0.5
1034-FC-03	3 "	6 "	0.5
1034-FC-04	4 "	6 "	1
1034-FC-05	5 "	6 "	1
1034-FC-06	6 "	6 "	1
1034-FC-08	8 "	6 "	1.2
1034-FC-10	10 "	6 "	1.6
1034-FC-12	12 "	6 "	2
1034-FC-14	14 "	6 "	2
1034-FC-16	16 "	6 "	2.4
1034-FC-18	18 "	6 "	2.6
1034-FC-18	20"	6 "	3
1034-FC-18	24"	6 "	3.2



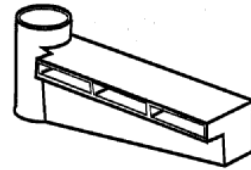
Hoods are fabricated to Harrison standards or customer specifications.



Double Lateral Hood

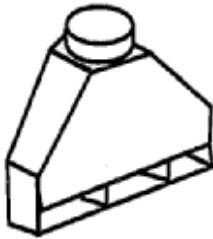
Lengths from 24" to 96"

Widths from 18" to 66"



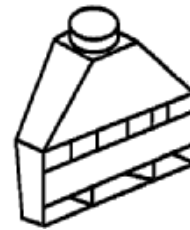
Single Lateral Hood

Lengths from 24" to 18 ft.



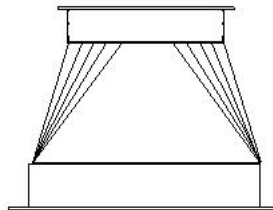
Single Slot Rear Exhaust Hood

Widths from 18' to 72"



Double Slot Rear Exhaust Hood

Widths from 18' to 72"



Transitions

Transitions (square to round, rectangular to round) with socket or flanged connections available per customer specifications. Transitions to dis-similar materials also available. Please contact us for pricing.